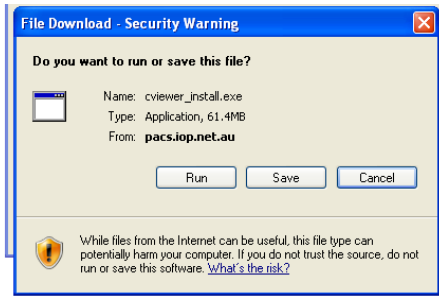


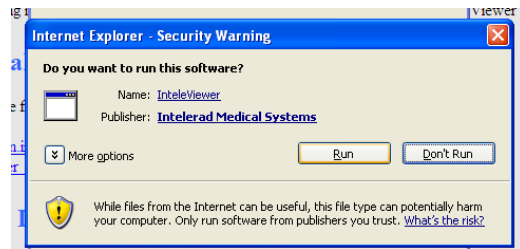
Install IntelViewer

1. Open Internet – Explorer, Safari, Google Chrome, Firefox
2. Visit <https://visionradiology.com.au/referrers/access-patient-images> and click on **IntelViewer Installers**
3. Select the installer suitable for your computer – PC 32-bit; PC 64-bit, MAC

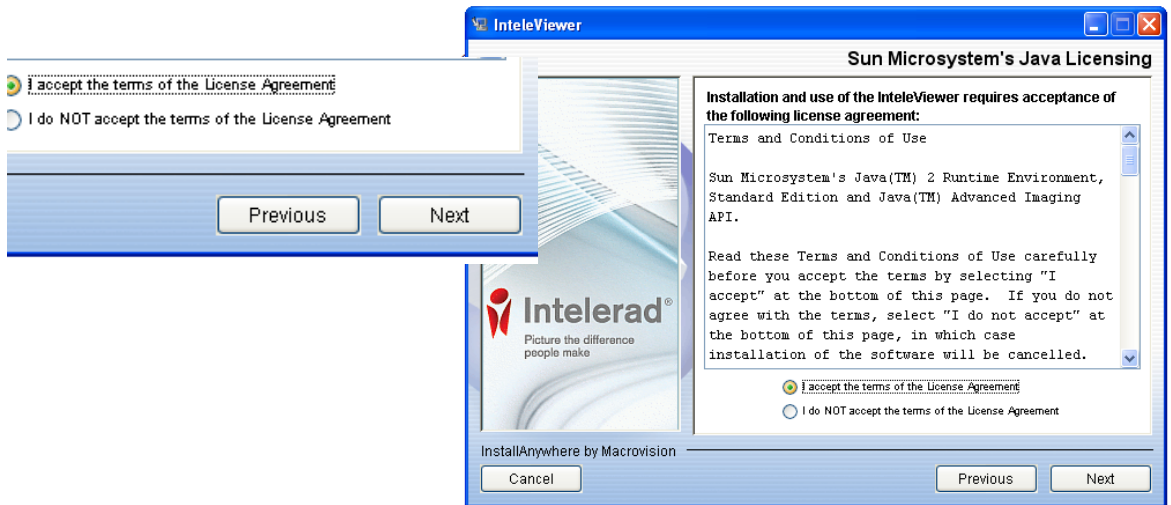
4. Click RUN



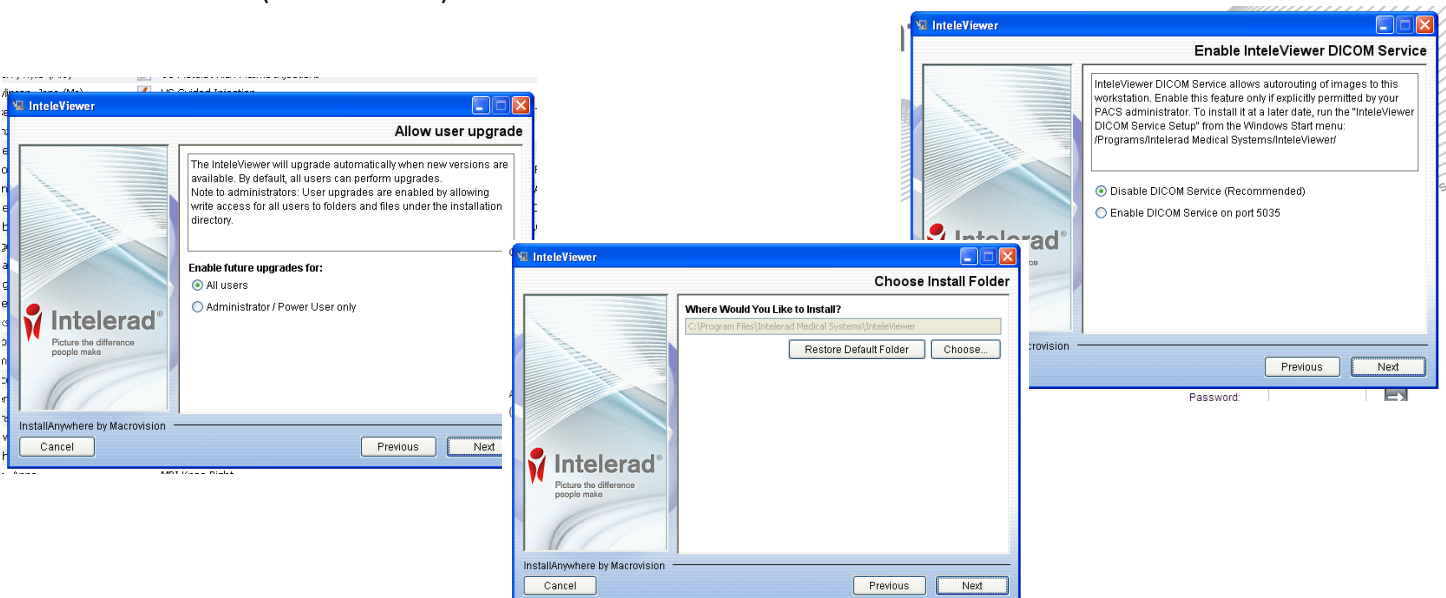
5. Click RUN



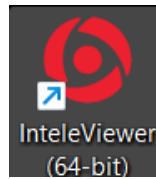
6. Accept the terms and press NEXT (next two screens)



7. Press NEXT (next 3 screens)



8. IntelViewer will now appear on your desktop



9. Either a message to add a New Server will appear or Click on Edit Bookmarks

10. Enter the field as shown.
It will validate the URL.

